

**FIXED PRICE
HOUSE & LAND
PACKAGE**

- Stylish, practical floorplans
- Amazing on-trend inclusions beyond the essentials



FIRST HOME BUYER **\$818,437***



Clovelly 225

4  2  2  2 | 12.5m

bridgewater
RANGE

Lot: 4215 Church Road, KEYSBOROUGH

Estate: Somersetfield

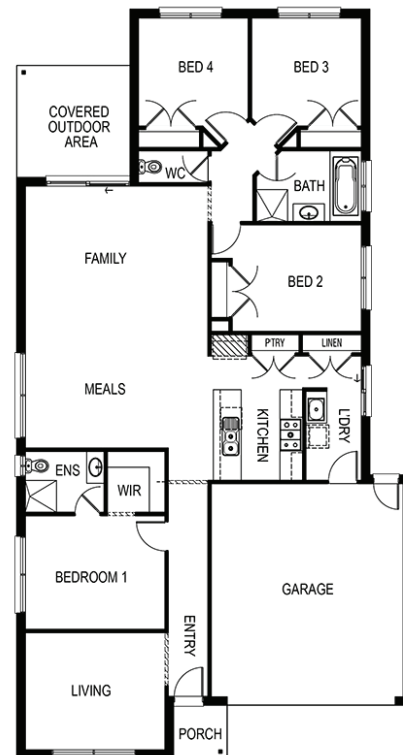
Block size: 405m²

Title Exp: May 2017

House Size: 22.53sq

Package Includes:

- Fixed Site Costs
- Flooring throughout
- Brivis evaporative cooling
- 20mm Stone bench top to kitchen
- Bulkheads to overhead cupboards
- Glass splashback to kitchen (House specific)
- Stainless steel dishwasher
- Microwave with trim
- 2x Pot drawers (House specific)
- Downlights (House specific)
- Garage door remote control
- Flyscreens to openable windows



www.fairhavenhomes.com.au

Ivan Vercej
t: 0434867572
e: ivercej@fairhavenhomes.com.au

South East
, VIC