

**FIXED PRICE
HOUSE & LAND
PACKAGE**

- Stylish, practical floorplans
- Amazing on-trend inclusions beyond the essentials



FIRST HOME BUYER **\$1,064,838***



Newport 361

5 bedrooms, 2 bathrooms, 2 cars, 16.0m

**bridgewater
RANGE**

Lot: 3536 Fernleaf Avenue , KEYSBOROUGH

Estate: Somerfield

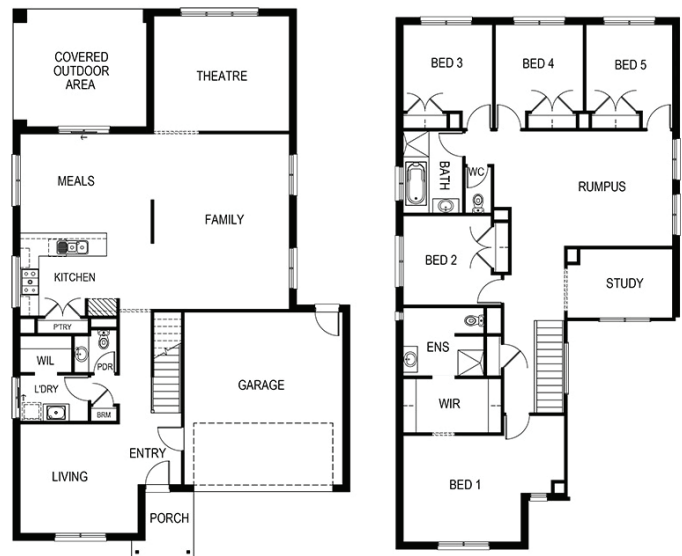
Block size: 512m²

Title Exp:

House Size: 36.14sq

Package Includes:

- Fixed Site Costs
- Flooring throughout
- Brivis evaporative cooling
- 20mm Stone bench top to kitchen
- Bulkheads to overhead cupboards
- Glass splashback to kitchen (House specific)
- Stainless steel dishwasher
- Microwave with trim
- 2x Pot drawers (House specific)
- Downlights (House specific)
- Garage door remote control
- Flyscreens to openable windows



www.fairhavenhomes.com.au

Ivan Vercej
t: 0434867572
e: ivercej@fairhavenhomes.com.au

South East
, VIC