



SOMERFIELD
—
TOWNHOMES



Stage 19

Stage 19

“architect
designed”

With an exceptional location at the corner of Stanley Road and Blanchard Avenue, start enjoying your new low maintenance lifestyle in Stage 19.

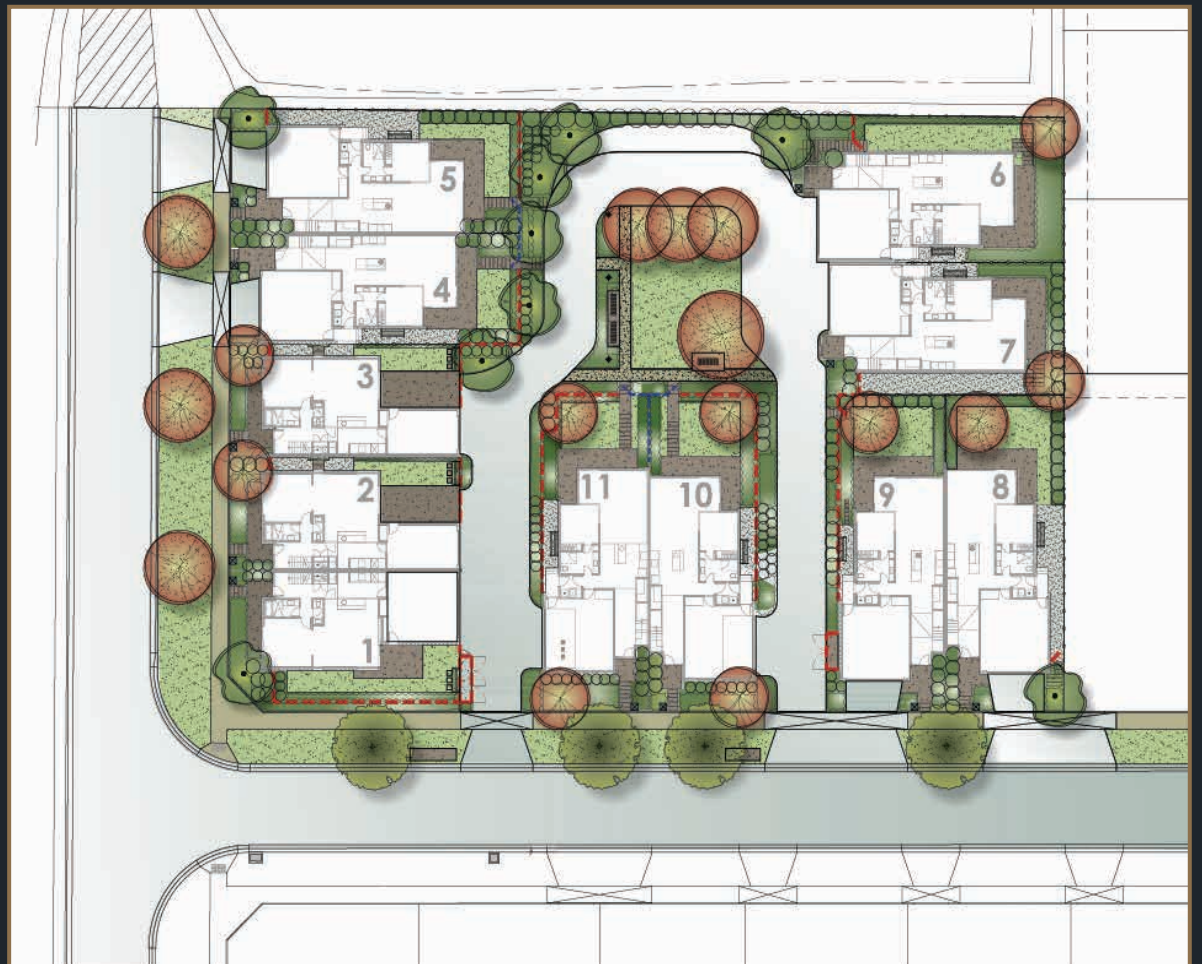
Brought to you by Intrapac, Stage 19 demonstrates the benefits of our 30 years experience in residential property.

Close to Somerfield's many parks, selected lots overlook a beautiful landscaped waterway.

There are two styles of home to fit your needs, the Como and Capri boasting distinctive classic architecture and clever flexible floorplans you'll love coming home to.

Stage 19 boasts flawless location, with easy access to the beach, CBD and all the amenities of the Somerfield estate.

Start planning your life at Stage 19 today, call 1300 362 459 or visit somerfield.com.au



Images in this document are intended to be a visual aid only and do not necessarily depict the actual development. Brencorp Keysborough Pty Ltd makes no warranty or representation as to the accuracy or sufficiency of any description, images or statements contained in this document and accepts no liability for any loss that may be suffered by any person who relies either wholly or in part upon the information presented. All information provided is indicative only and subject to change without notice including changes that may be required to gain authority approvals. Nominated items may be substituted without notice with a similar product at the discretion of Brencorp Keysborough Pty Ltd. Title dimensions and boundaries are subject to registration of the final plan of subdivision. Any dimensions and areas shown in this document are indicative only. Any noted internal room dimensions are measured to the structural surface behind any plasterboard and other wall finish and building areas are generally measured to the external face of external walls and to the centerline of shared walls.

Developed by
INTRAPAC